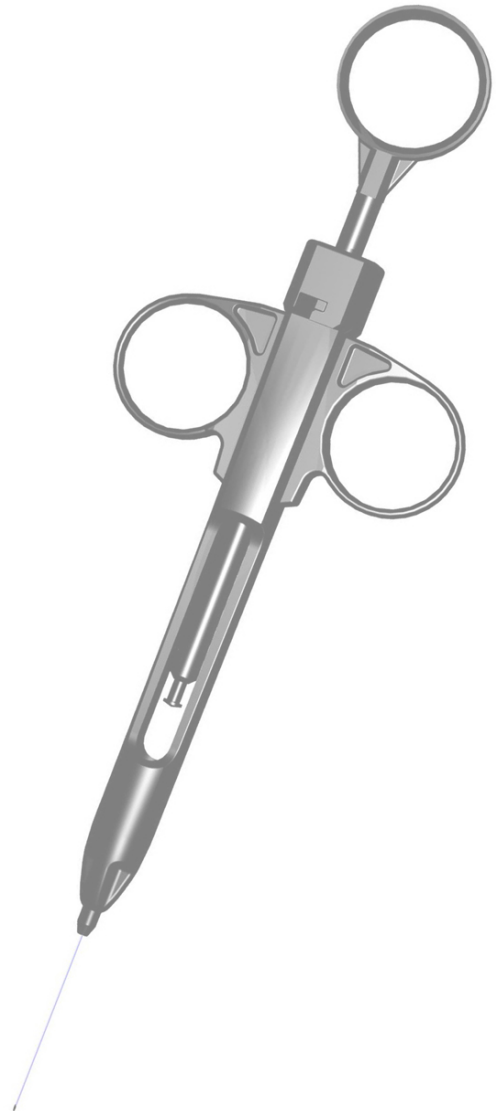




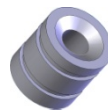
**Rocket**medical

# Rocket® CERVINEEDLE® Cartridge Syringe



The Rocket® CERVINEEDLE® Cartridge Syringe offers a simple, cost effective solution to the risks to staff and patients associated with reprocessing of autoclavable 'dental syringes'.

- **SIMPLE BREECH LOADING**, suitable for all standard 2.2ml glass vials. Rotate the breach cap, remove, then load vial and reinsert the breach plug. Locking the plug into position seals and pierces the vial ready for injection.
- **COST EFFECTIVE, SINGLE** eliminates costly reprocessing concerns and reduces patient costs. Ideal for use in dermatology, colposcopy, dental practices and any department using local anaesthetic vials.
- **RELIABLE ASPIRATION** when used with vials with hollow end plugs, the syringe allows full aspiration to ensure correct, safe placement. The syringe can also be used with solid plug, non aspirating vials.
- **TWO NEEDLE STYLES:** standard 26G x 35mm dental needle or CERVINEEDLE® designed for controlled injection into the cervix. 90mm needle with 6mm x 27G tip



Description	Needle Type	Order Code
<b>CERVINEEDLE® Cartridge Syringe</b> for use with 2.2ml glass vials, solid or aspirating plug.  Sterile, for single patient use, packed in cartons 10 units.	26G x 35mm Dental type	<b>R57870</b>
	CERVINEEDLE® 90mm: 21G x 84mm with 27G x 6mm needle tip	<b>R57870-00-PK</b>

Rocket® and CERVINEEDLE® are registered trademarks of Rocket Medical plc.

